



विद्यया विन्दतेऽमृतम्

IRSTE

INSTITUTION OF
RAILWAY SIGNAL AND
TELECOMMUNICATION
ENGINEERS (INDIA)

&



IRSE

INSTITUTION OF
RAILWAY SIGNAL
ENGINEERS

Indian Section

Host

**International Convention
on**

Modern Train Control For Capacity & Safety Enhancement



**April 27 - 28, 2012
New Delhi**

Diamond Sponsors



Gold Sponsors



BOMBARDIER



HITACHI



SIEMENS

THALES

ZTE中兴

Welcome to the International Conference 2012

Mission

The 2012 International Conference will be held in India, based at New Delhi. The programme will commence on the morning of Friday 27th April and terminate on the evening of Saturday 28th April.

New Delhi is the capital of India, and was planned by Edwin Lutyens, a leading 20th century British architect, and is known for its wide, tree-lined boulevards. It houses numerous national institutions, including the Secretariat, the Presidential Palace and the Parliament House, all originally built as part of the headquarters of the British Raj. There are a large number of major landmarks such as Qutub Minar minaret (a UNESCO World Heritage Site), the Red Fort (also a UNESCO World Heritage Site), the Lotus Temple, the Akshardham Hindu Temple and the India Gate.

New Delhi has its own International Airport, Indira Gandhi International, about 15 km south west of New Delhi center.

India is a major railway country with the enormous network of lines and separate Ministry of Railways, which looks after the vast network. New Delhi is a large, very busy complex station. New Delhi has an equally busy and rapidly developing metro system. Despite that, the roads in Delhi are also extremely busy and the traffic congestion is heavy.

Conference | Sessions & Workshops

Speakers from all over the world will lead sessions on relevant technological opportunities for the industry, discussing them in detail and generating new ideas for the future of 'Modern Train Control System' 2 days. Inform yourselves about interesting topics :

Like European Train Control Systems, Train Protection & Warning Systems, Incremental Train Control Systems, Solid State Train Control Systems, Indigenous Train Control & Advance System, IP based Surveillance System, Core IP based Telecommunication Infrastructure for Safety and Train Operation, Train Management System, Modern passenger Information system Technology for National Optical Fiber Network, Broad Band on Trains, PPP Projects in Signalling and Broad Band.

Check out who will be there :

Look for Train Control Systems

How this allow trains to run in dense fog, how the collisions and accidents can be stopped.

New policies in Railway Signalling & Telecom: What its policy makers say ?

Look for and share knowledge about the creation of NOFN for Broad Band to rural areas, what should be the standards, how the architecture should be.

Listen to Scientific Secretary Govt. of India, Administrator, UoF, Director CDOT etc.

How the Railway Portal can be designed as modern passenger information system :

A brief on the modern Rail Portal to serve customers of Indian Railways. Listen to CRIS, HCL, etc.

How to tackle intrusion across railway boundaries:

What is there in the design using ICT Infrastructure to monitor and track any intrusion.

Telecom Infrastructure for greater safety:

Listen to recommendations of High Level Safety Review Committee.

Exhibition

Modern Train Control Systems :

Testing and optimization of new technologies in Modern Train Control Systems, ample opportunities for discussions, the exchange of experience and presentations on future developments. Approximately 50 renowned enterprises and associations from 10 countries, display their cutting-edge products and developments at the centre, as well as innovations in Train Control

Exhibition Visits :

Friday 27th April 2012 from 10 AM

One hour tour to the exhibition everyday for delegates of seminar.

Find more information and complete conference programme on : www.irse.org.in & www.irsteindia.com

Focus Area

- Modern Train Control Systems like ETCS level 1, ETCS Level 2, Indigenous TCAS, ITCS etc.
- Anti Collision Device
- Signalling systems for Freight Corridors world around
- Signalling and Telecom Systems on Metro
- Modern Electronic signalling systems, Axle Counting Systems etc.
- OFC based Signalling systems and futuristic Cloud based signalling
- Communication based Train Control systems
- Wire less telecom systems for safe communication like GSM-R, Tetra, WiMax and migration strategies to LTE-R
- Modern IP based Telecom Infrastructure for safe and efficient Train Control, Operations and management, Telecom infrastructure for PRS
- Satellite based systems for Railways for operations and Broadband
- Content Delivery Network for Railway services - Railwire, CDN, Data Center
- Rail Portal and Integrated Passenger Train Information Systems
- The convention shall also focus on the creation of a nation wide strategic core telecom and IP infrastructure for various national projects like :
 - National Optical Fiber Network (NOFN a mega project of Govt. of India), technologies thereof like SDH, DWDM, GPON, OTN, PTN etc.)
- PPP Project of Broadband roll out by RailTel in the country.
- GPON based Broadband services for Government Organization
- Intelligent Traffic Management Systems for Smart Cities - Surveillance, traffic management and security
- National Knowledge Network (NKN)

Global Presence

- DMRC
 - Indian Railways
 - DFCC
 - RailTel
 - RVNL
 - IRSE, London
 - RENFE, Spain Railways
 - Japanese Railways
 - Dutch Railways
 - Asia Lloyd Register
 - Network Rail
- and many others.....

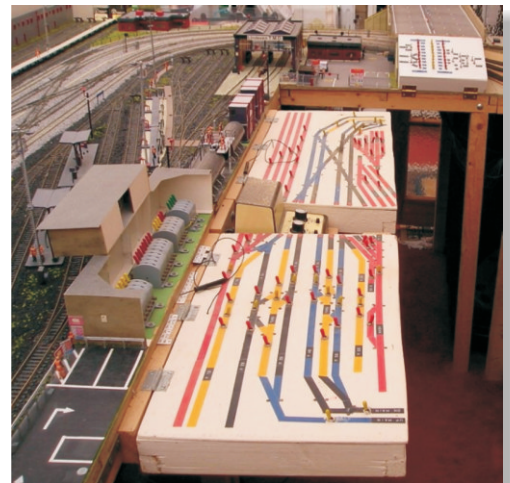
Target Audience

- Railway Operations Executives
- Chief Executives
- Engineers From Railway Signalling & Telecom Systems
- Production Executives
- Technical Personnel
- Managers
- Designers
- Manufacturing Companies
- Railway Consultancy Organizations
- Traders
- Regional/zonal Set ups of Indian Railways
- Research Organizations

Conference Programme at Manekshaw Centre Zorawar Auditorium

Friday, 27th April 2012

- 08.30 - 09.30** **REGISTRATION**
- 10.00 - 11.00** **INAUGURAL SESSION**
(i) Inauguration of Exhibition
(ii) Inauguration of Seminar
- 11.00 - 11.45** **TEA BREAK & EXHIBITION VISIT BY DELEGATES**
- 11.45 - 13.30** **TECHNICAL SESSION - I**
MODERN TRAIN CONTROL SYSTEMS
- 13.30 - 14.30** **LUNCH BREAK**
- 14.30 - 18.00** **TECHNICAL SESSION - II**
**MODERN SIGNALING & TELECOM SYSTEM FOR ENHANCED SAFETY,
RELIABILITY & LINE CAPACITY**
- 18.00 - 20.00** **EXHIBITION VISIT BY DELEGATES**

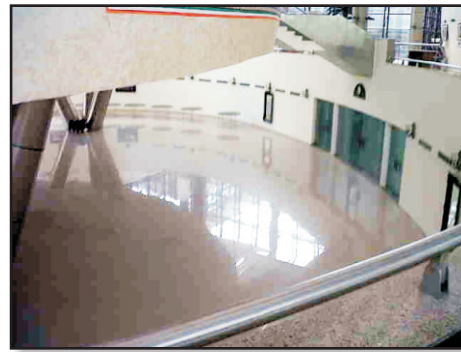
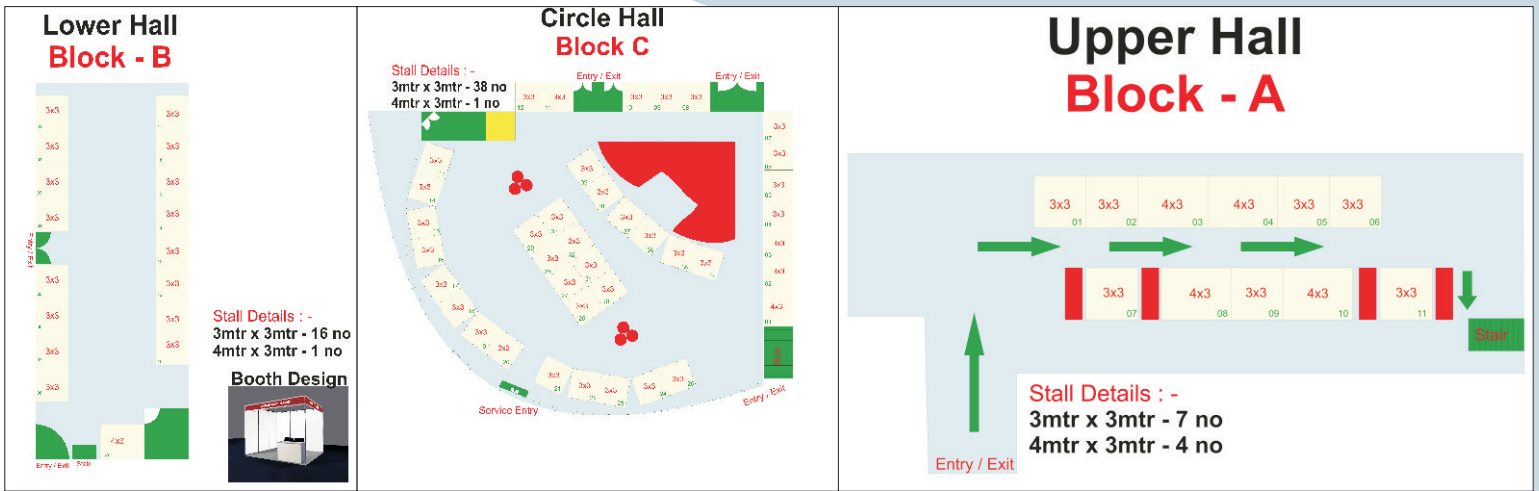


Saturday, 28th April 2012

- 09.30-12.30** **TECHNICAL SESSION - III**
**MODERN TELECOM SYSTEMS FOR
SAFETY & EFFICIENT TRAIN MANAGEMENT
AS WELL AS TELECOM NETWORK DESIGN
FOR STRATEGIC SECTORS**
- 12.00 - 14.15** **TECHNICAL SESSION - IV**
**CASE STUDIES- MODERN PROJECT
MANAGEMENT AND COMPETENCY
DEVELOPMENT TECHNIQUES FOR
SAFETY & SIGNALING SYSTEM.**
- 14.15 - 14.45** **LUNCH**
- 14.45 - 16.00** **VISIT TO EXHIBITION**

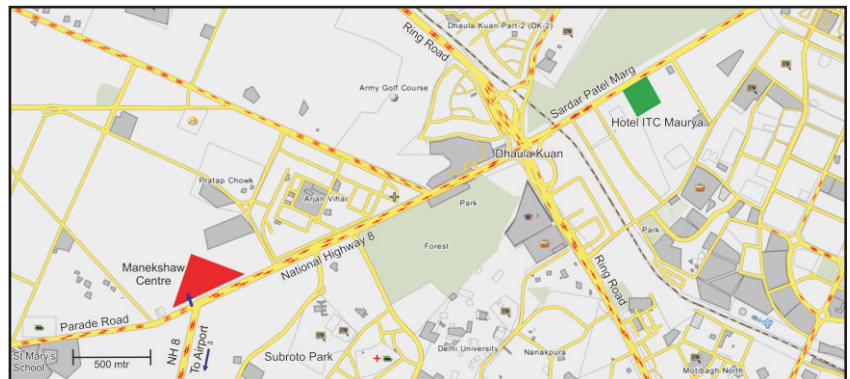
Each Session shall be followed by Panel Discussion

Exhibition Hall



Conference Accommodation

1. HOTEL LE MERIDIEN
2. HOTEL OBEROI
3. HOTEL MAIDENS
4. HOTEL CLARIDGES
5. AIRPORT
6. NEW DELHI RAILWAY STATION



Participation Fees

Rate of Exhibition space only.

9 Sqm.	₹ 1,00,000/-
18 Sqm.	₹ 1,50,000/-
36 Sqm.	₹ 3,00,000/-

Delegates fees for conference

(a) Railway / IRSTE members / IRSE	₹ 3,500/-
(b) Corporate sponsored members	₹ 25,000/-

Advertisement in Souvenir

Back Cover page	₹ 1,50,000/-
Inside page of back & front cover pages	₹ 1,00,000/-
Center Spread (Colour)	₹ 2,00,000/-
Full page B&W	₹ 50,000/-
Half Page Colour	₹ 50,000/-
Half page B&W	₹ 30,000/-
Quarter Page (B&W)	₹ 20,000/-

Note:

- (i) Sponsor requiring additional space shall be charged as per applicable rates.
- (ii) Delegates in addition to free delegate for sponsors shall be charged the applicable delegate fees.

Contact : Mr. Kundan Chaudhary, CAO / IRPMU Mob. : +91-9717640000 Email : kundanchaudhary1956@gmail.com
 Mr. Anshul Gupta, ED / RailTel Mob. : +91-9958019900 Email : anshulgupta63@gmail.com
 Mr. Gautam Arora, GM / S&T / DFCCIL Mob. : +91-9717636892 Email : gautamarora22@gmail.com